

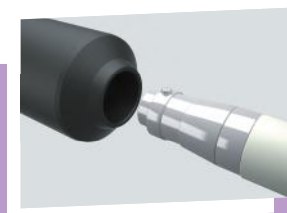
Linking HV Grids Worldwide

Within the network components group, we design, produce, distribute and install high and extra-high voltage cable systems. Our expertise in the system design field helps push the existing boundaries to come up with innovative solutions to secure reliable and sustainable supply of electricity for the development of communities.

The Click-Fit Concept

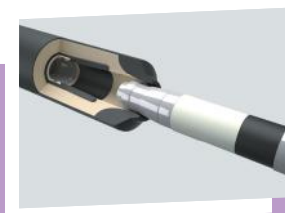
The unique Click-Fit principle is based on a simple plug & play philosophy that allows for time-efficiently connecting (extra) high voltage cables and systems. The worldwide proven Click-Fit locking mechanism prevents cable movement within the

The simple concept can be explained in three steps.



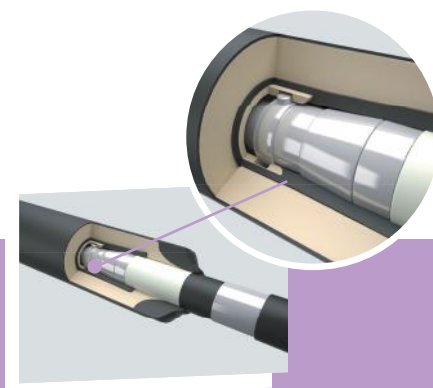
Step 1

Cable plug prepared with spring loaded locking pin.



Step 2

The cable end is inserted with the locking pin pressed down (after lubrication of insulation).



Step 3

The cable end is plugged into its final position with the locking pin extended. The cable is mechanically locked.

Terminations → OTC/CFT/FD Family



Want to know more about this product?



→ Product Range



→ Solutions



→ Datasheets

Disclaimer:

All rights reserved. Reproduction in whole or in part is prohibited without the prior written consent of the copyright owner. The information presented in this document does not form part of any quotation or contract, is believed to be accurate and reliable and may be changed without notice.

No liability will be accepted by the publisher for any consequence of its use. Publication thereof does not convey nor imply any license under patent or other industrial or intellectual property rights.

Click-Fit

Schieweg 9
2627 AN Delft, Netherlands

PO Box 495
2600 AL Delft, Netherlands

+31 (0)88 - 808 4444
info@click-fit.org

www.click-fit.org

ClickFit™

PRODUCTS

Terminations

OTC/CFT/FD Family



A brand of the
Prysmian
Group



Over 50,000 solutions sold worldwide.”



Click-Fit Terminations

Outdoor terminations are used in the high voltage power grid for connecting overhead lines to equipment such as switchgear and transformers. The terminations can also be used to connect mobile energy solution equipment.

Product Overview

Description	Code	Available for cable systems with maximum system voltage U_m [kV]								
		72.5	123	145	170	245	300	420	550	
Outdoor termination - composite*	OTC - (U_m) - (X)	✓	✓	✓	✓	✓	✓	✓	✓	✓
Outdoor termination - dry type	CFT - (U_m) - (X)		✓	✓	✓					
Outdoor termination - flex dry**	FD - (U_m) - (X)		✓	✓						

* Porcelain terminations available upon request

** Available with self-support structure

Product Features

- Dry-type termination reduces risk in the event of a system fault
- Silicone rubber has excellent water repellent properties in comparison to porcelain
- Internal oil pressure management for composite terminations
- Composite terminations save up to 80% in weight compared to traditional porcelain terminations

Terminations → OTC/CFT/FD Family

Why choose Click-Fit?



Compatibility



Installation



Testing & Diagnostics*



Reliability



Engineering



Purchasing



Project Management

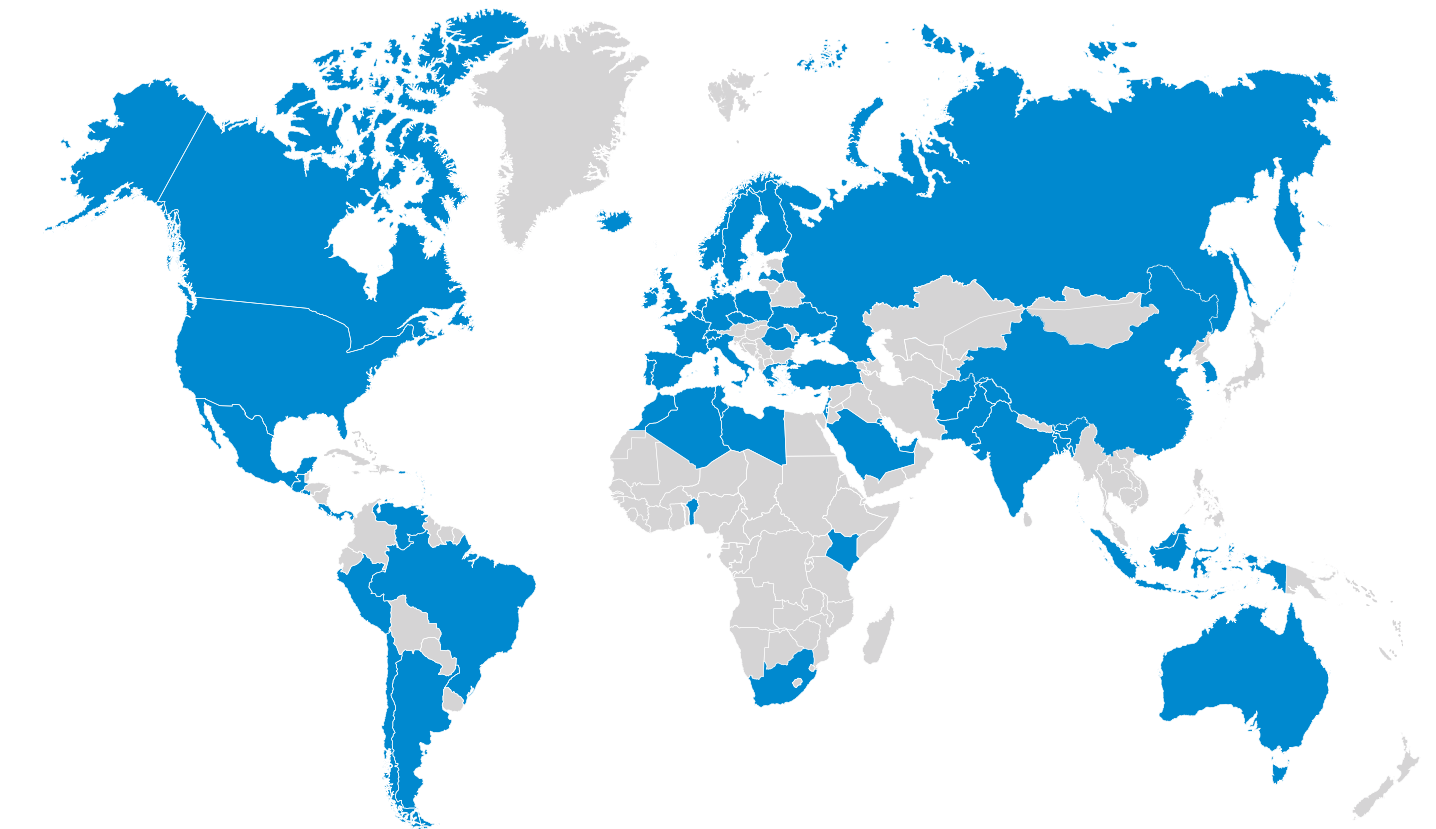


Asset Management

System and Accessories Engineering – Tailor Made Solutions	Support in calculation of cable system design specifications	Extensive testing methods, compared to international standards	Pry-Cam partial discharge monitoring system
Complete product portfolio, compatible across all cable manufacturers	Pre-connected cable ends reduce on-site installation costs up to €1,000 per substation	Full compliance with international specifications and standards	Proven track record, in low and high temperature environments: ~10,000 products installed in Russia, ~2,000 products installed in ME
Project driven organisation, offering training, tools, QSHE advice, installation resources and turn-key project management	Pre-connected cable ends reduce installation time up to 15% per substation	In-house knowledge: HV research lab and on-site testing facilities	24/7 Engineering and installation support
Modular design ensures compatibility, independent of cable system specifications	Cross-usability across the Click-Fit product range and voltage levels reduces the costs of your base tool set by 67%	Maintenance experience and on-site diagnostics	Supply of spare parts & 24/7 logistics support

Our partners all over the world

Siemens | TenneT | Réseau de Transport d'Électricité (RTE) | Red Eléctrica de España (REE) | Infratek | Vattenfall | Alstom
 Scottish Power | Stedin | Liandon | National Grid | Asea Brown Boveri (ABB) | Petrofac | Commonwealth Edison (ComEd)
 | Potomac Electric Power Company (PEPCO) | Consolidated Edison (ConEd) | Estralin Power Systems | Taihan Electric Wire |
 Abu Dhabi Transmission & Despatch Company (Transco) | Dubai Electricity and Water Authority (Dewa) and many others



* For further information about diagnostics and monitoring services have a look at our service brochure.



Terminations → OTC/CFT/FD Family